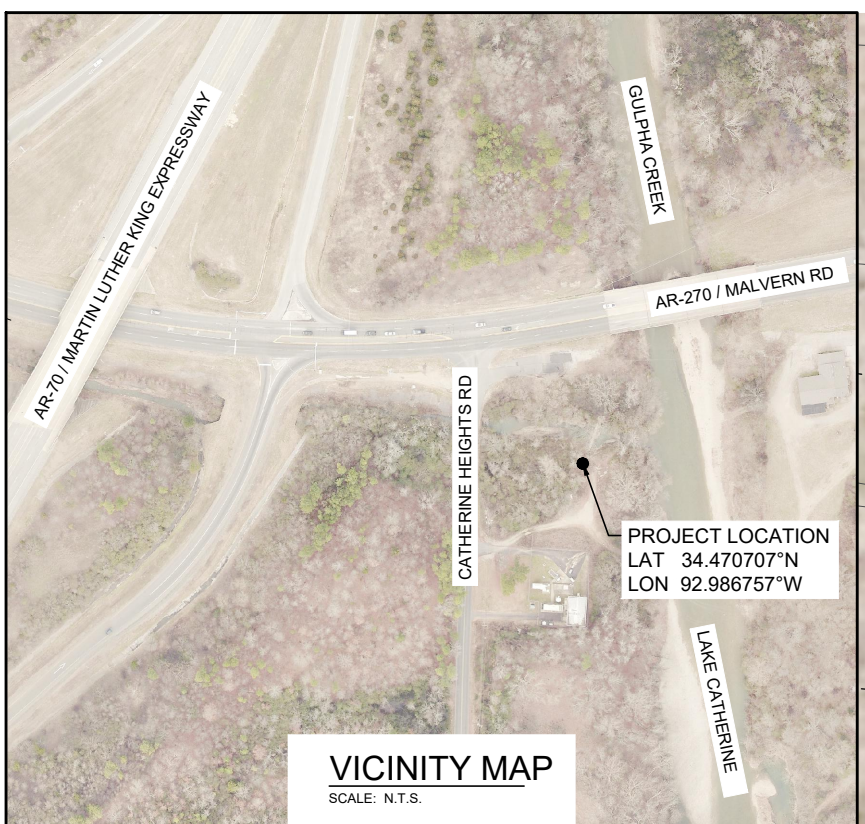
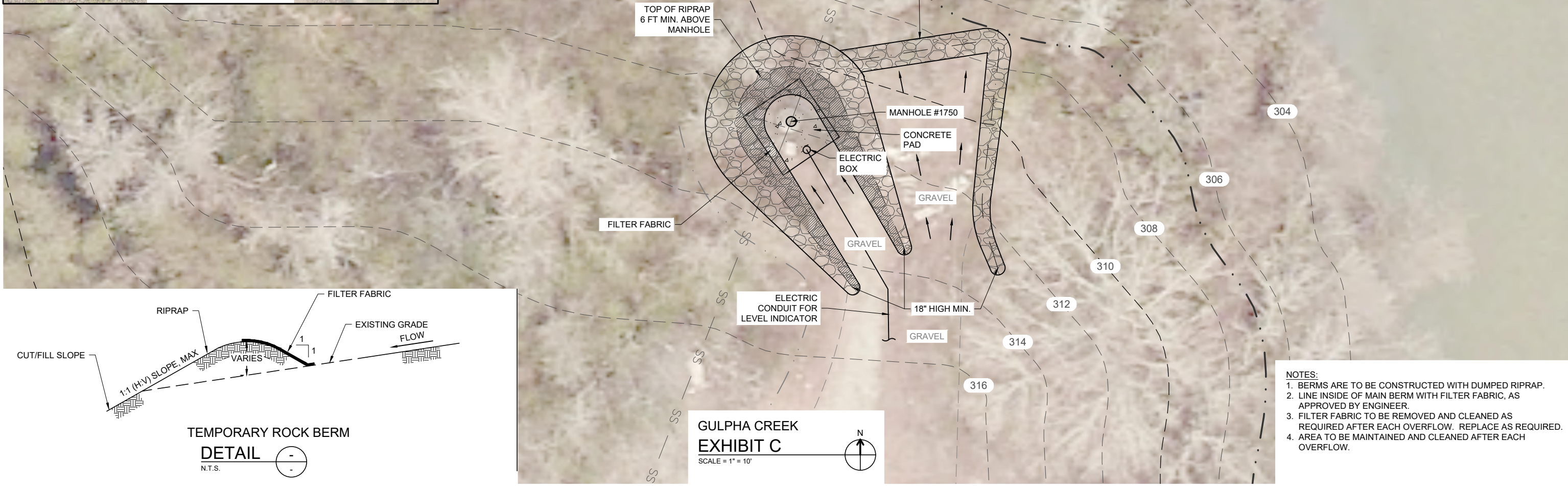


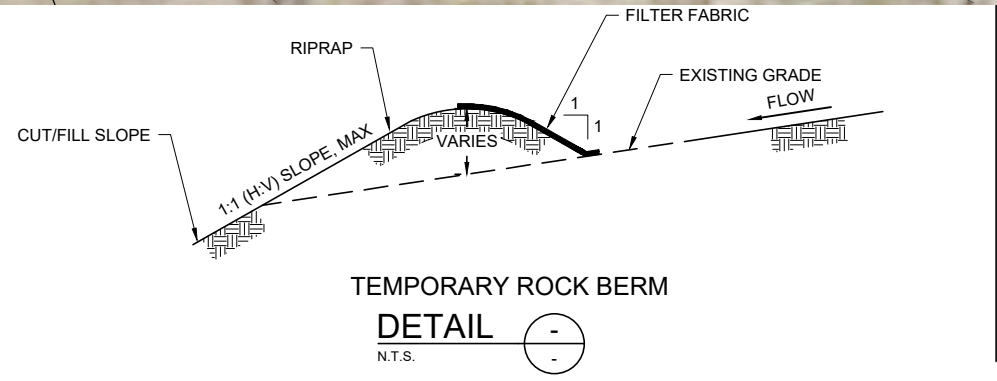
P:\2020 Projects\2026 - CHS PWO No. 01 ADEE-DEO CAO Negotiation and CAP\06 - CADD\02 - Civil\Gulpha Creek\Gulpha Creek Exhibit C.dwg 8/18/2021 1:39 PM



**VICINITY MAP**  
SCALE: N.T.S.



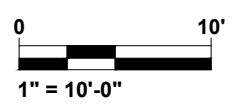
**GULPHA CREEK  
EXHIBIT C**  
SCALE = 1" = 10'



**TEMPORARY ROCK BERM  
DETAIL**  
N.T.S.

- NOTES:**
1. BERMS ARE TO BE CONSTRUCTED WITH DUMPED RIPRAP.
  2. LINE INSIDE OF MAIN BERM WITH FILTER FABRIC, AS APPROVED BY ENGINEER.
  3. FILTER FABRIC TO BE REMOVED AND CLEANED AS REQUIRED AFTER EACH OVERFLOW. REPLACE AS REQUIRED.
  4. AREA TO BE MAINTAINED AND CLEANED AFTER EACH OVERFLOW.

**CRIST ENGINEERS, INC.**  
CONSULTING ENGINEERS LITTLE ROCK, ARKANSAS



DATE: JUL. 2021

HOT SPRINGS, ARKANSAS  
**UTILITIES DEPARTMENT**  
**GULPHA CREEK**  
EXHIBIT C